

# Hall Stage

PURVEYORS OF INNOVATIVE ENGINEERING SINCE 1898

# T60 TRACK



**JOHNS.HYATT**  
and associates inc

CUSTOM THEATRICAL SOLUTIONS

SALES • RENTALS • CONSULTING

WWW.JSHAA.COM

THE ORIGINAL T60  
CURTAIN TRACK  
FROM HALL STAGE



With thousands of miles of operational systems installed all over the world, T60 Track is a standard-setting product range with a proven record.

Delivering great value, with reliable and dependable performance every time, T60 track is designed to meet the exact requirements of any stage.

Built with the entertainment industry in mind, T60 can be supplied from stock or custom-made to fit your stage...wherever it is.

Hall Stage Ltd, Unit 4 Cosgrove Way  
Luton, Bedfordshire, LU1 1XL  
sales@hallstage.com

Tel: + 44 (0)1582 439440  
Fax: + 44 (0)1582 720904  
UK Low Rate Call: 0845 345 4255

www.hallstage.com

## T60 TRACK

### APPLICATION

Medium duty track used in a wide range of stage and studio applications.

### CAPACITY

- Wheeled runners 4kg capacity, one runner per 300mm of curtain length recommended.
- Optional ball raced runners 6kg capacity.
- All T60 track systems and components have been load and destruction tested and function perfectly with a 50kg-imposed load, with only 2mm distortion over a 1.5m unsupported span.

### TRACK FORMS/CONFIGURATIONS

- Wide range of configurations:
- Straight Lengths 250mm - 3000mm
- Curved: sections from 0.5m radius.

### FINISH

Black epoxy powder coat finish minimizing reflection. Other colours and finishes available on request.



**T60 Switch Point**

Please refer to the current price list or track pricer for COMPLETE TRACK KITS and all available components.

Full specifications of the T60 track range and other fine stage and theatre products may be obtained from our web site as downloadable product data sheets

For more information visit: [www.hallstage.com](http://www.hallstage.com) or enquire via e-mail: [sales@hallstage.com](mailto:sales@hallstage.com)

In line with a programme of continued product development and improvement. Hall Stage Limited reserve the right to vary the specification, design or construction of any products/equipment described or offered for sale, or to withdraw or replace products/equipment without prior notification or public announcement.

### OPERATION

Walk along, hand line, hand winch or with dynaglide curtain controller. Rearfold system options for hand or electric traverse systems.

### FIXING OPTIONS

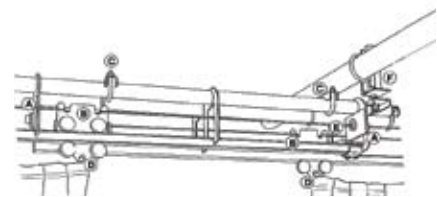
A wide range of fixing kits are available to support track from suitable structures. One fixing every 1.5mtrs is recommended. The descriptions below are for standard fixing options. For further alternatives please contact us with your requirements.

- Universal clamp, used to support track from wooden joist, provides track attachment to other fixings via M10 stud.
- Face Fixing Bracket to fix track to adjacent wall or proscenium opening.
- Girder Fixing Clip to suspend track from steel girder widths between 75mm and 150mm.
- Tube Fixing Clip to suspend track from horizontal pipe of 38mm, 48mm or 60mm diameter.
- Deadline Suspension Hanger to suspend track directly from a suitable support via 4mm cable.
- Barrel Fixing Clip to suspend single track lengths directly below and parallel to barrel with 38mm, 48mm or 60mm diameter.
- "Z" Brackets to suspend overlapped tracks directly below and parallel to barrel with 38mm, 48mm or 60mm diameter.

### ADVANCED FEATURES

The T60 Track can be custom built to suit your specific requirements.

- Scenery Carriers can be used to move significant loads on all Hall Stage tracking systems.
- Swivel Arm Carriers can be used to move and swivel curtain legs.
- Beam Track. T60 Track can be strengthened and flown with a motor unit by adding a beam to the spine.
- Switch Points are used to transfer curtains between tracks and are available in manual (remote or local control) or electric operation in a variety of track configurations.
- Diversions: All operating systems can be diverted using pulley systems to allow the control of your track to be positioned as required.



**Figure 1 Key**

A	Line Guides	G1193
B	Wheeled Runner/ Slider master straight track	G3750
C	Overlap Clips	G3291
D	Tubepole	G3278
E	Stop Brackets	G2751
F	Tube Fixing Clip 48mm	G3136

**Figure 2 Key**

A	Clearance of adjustment between 18mm - 100mm
B	Stud Bolts 10mm dia in 150mm and 300mm lengths
C	Universal Fitting
D	10mm dia bolt holes
E	Face Fixing Bracket, 150mm reach (inner track)
F	Recommended clearance for track
G	Recommended clearance for curtains

All dimensions in mm

